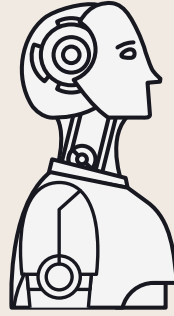
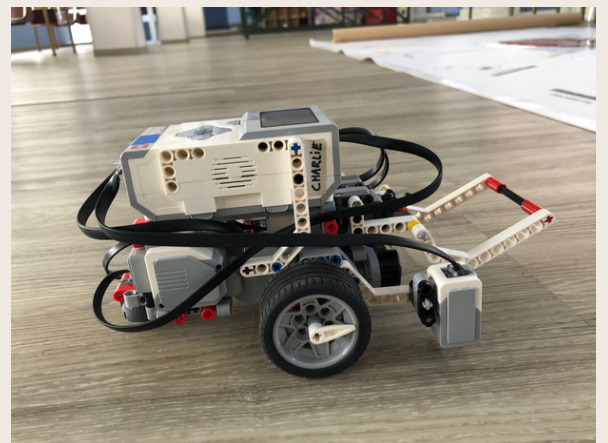
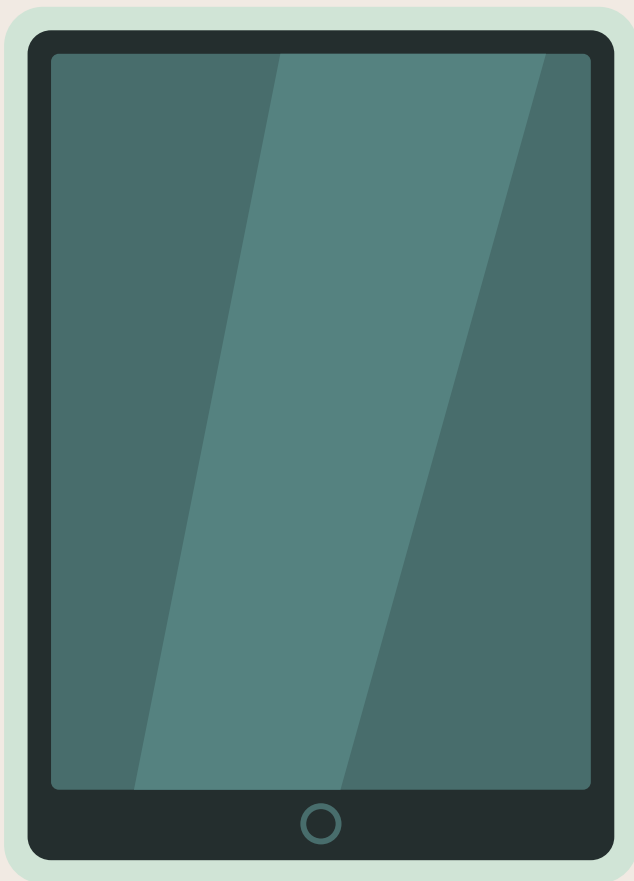


1^o

MISSION

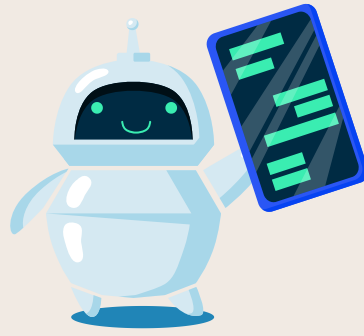


Go with your robot to the next mission.
Your robot has to go forwards. Calculate
the correct power and seconds.
Let's go!



2^o

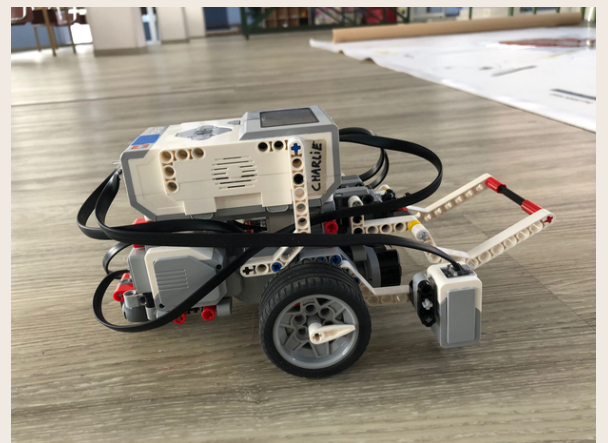
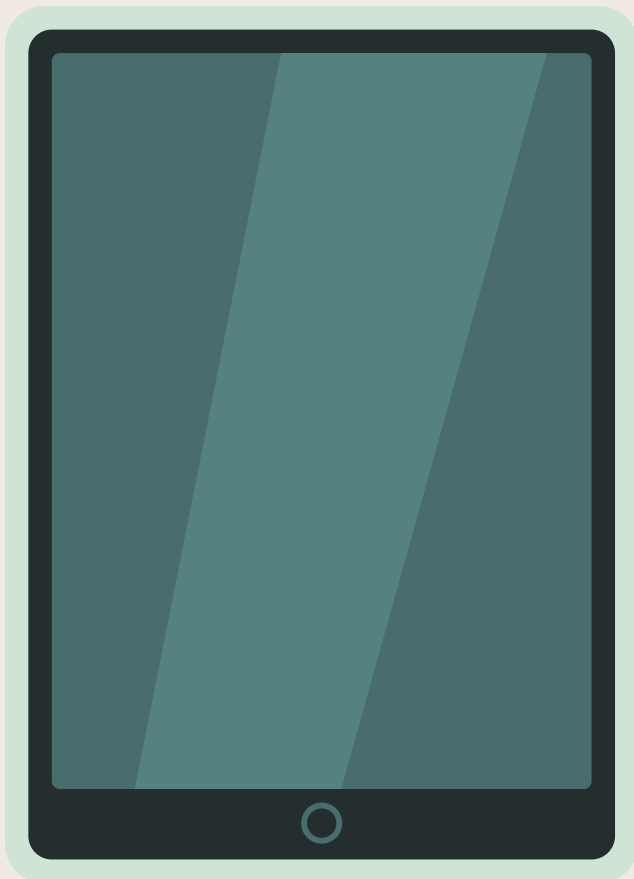
MISSION



Your robot have to turn and go to mission 3.

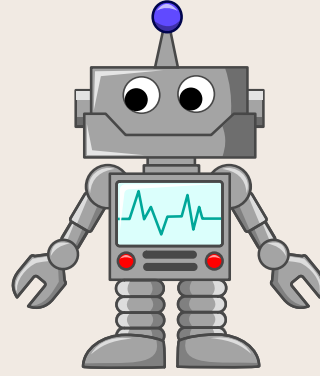
Choose the motor and calculate the correct power and seconds.

Let's go!



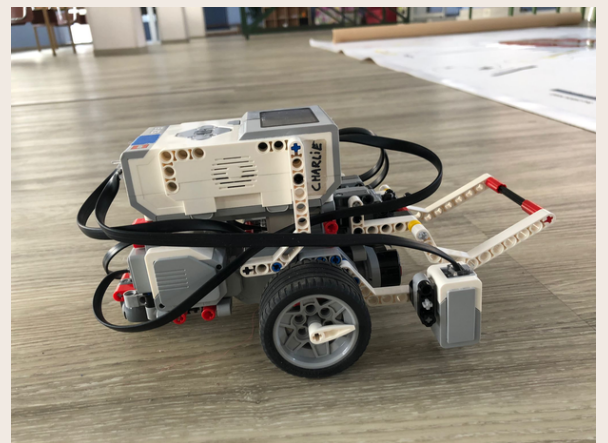
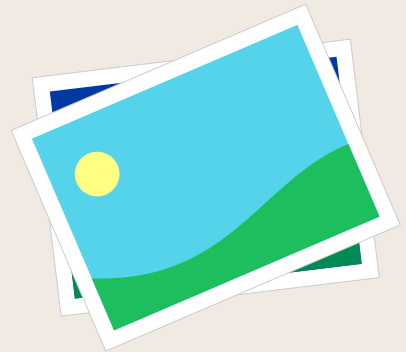
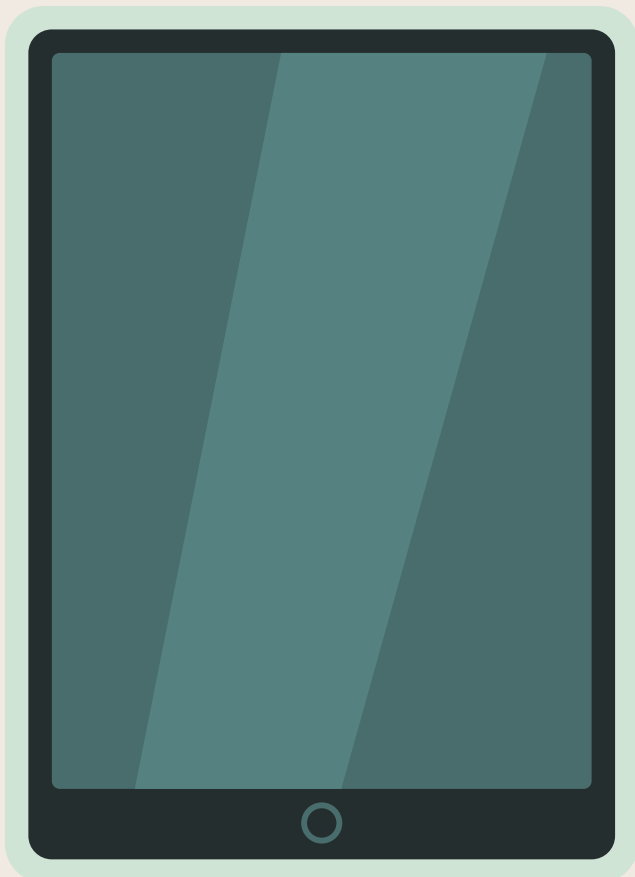
3^o

MISSION



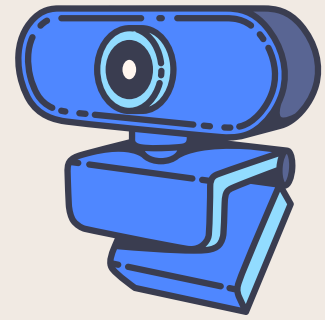
Make your robot to turn, go to mission 4 and when it arrives, an image of a tree appears on the display.

Each mission is more difficult...
Good luck!

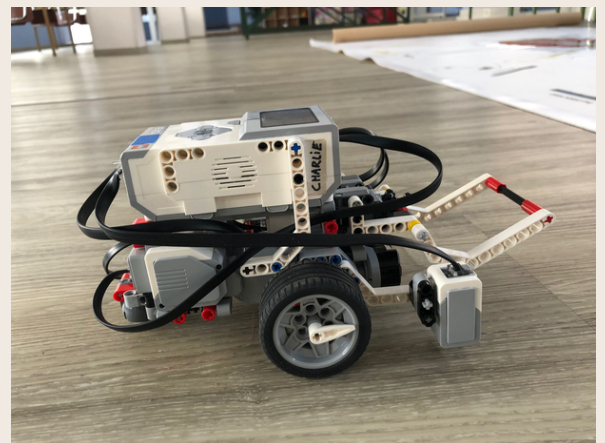
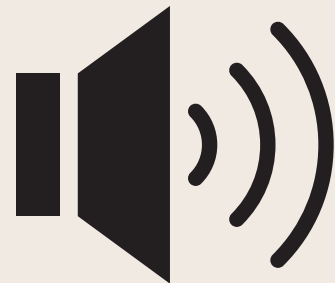
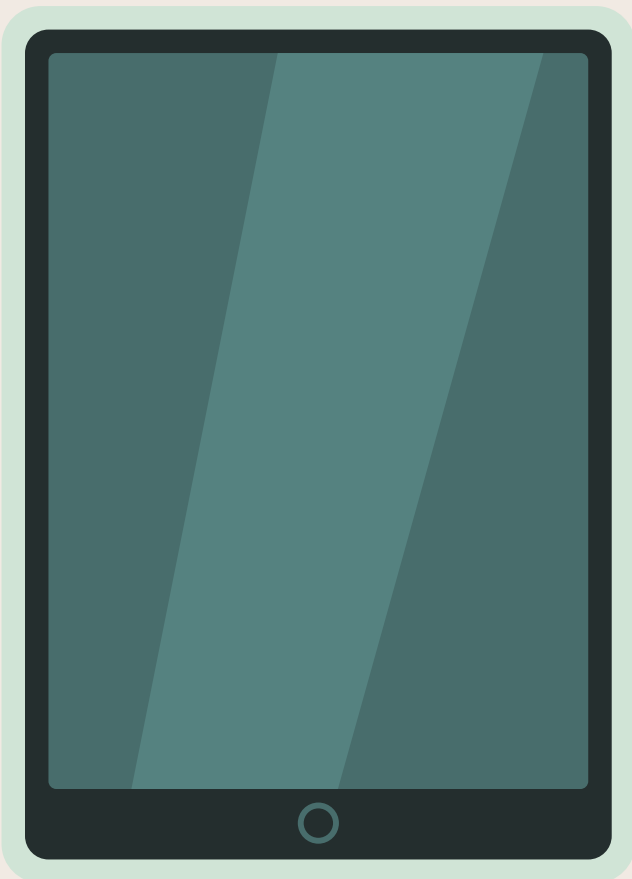


4^o

MISSION



You have to get your robot to go to the next mission and play a sound of animal.

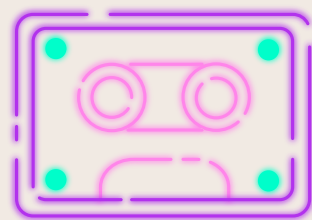
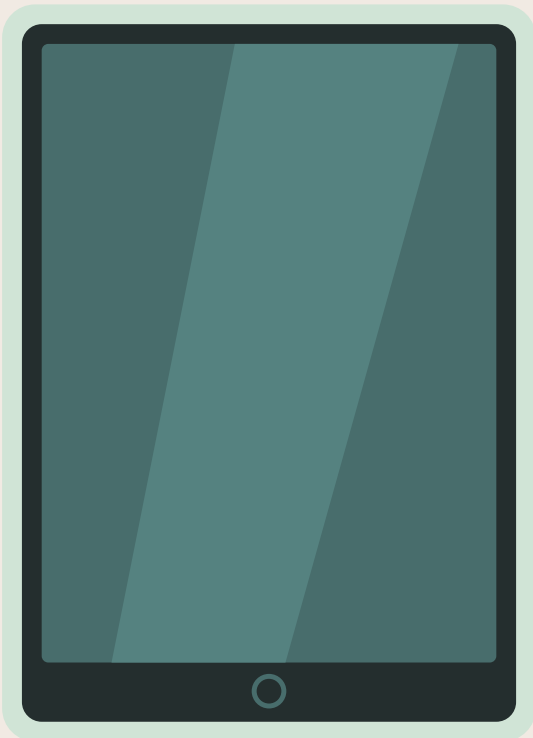


5^o

The last mission is:

- Enter in the red circle where it says "Almazán".
- Record a phrase about the environment
- the robot repeats the phrase you have recorded.

Example: Save de planet!





If you have time...
return with your robot to the exit and
do the tour again.

This is the most difficult mission!!!

