

---

FEEL THE MUSIC

CREA  
BANDA  
SONORA



[www.antoniodomingo.es](http://www.antoniodomingo.es)

...el arte de enseñar con música



# CAMINO A LA MEMORIA

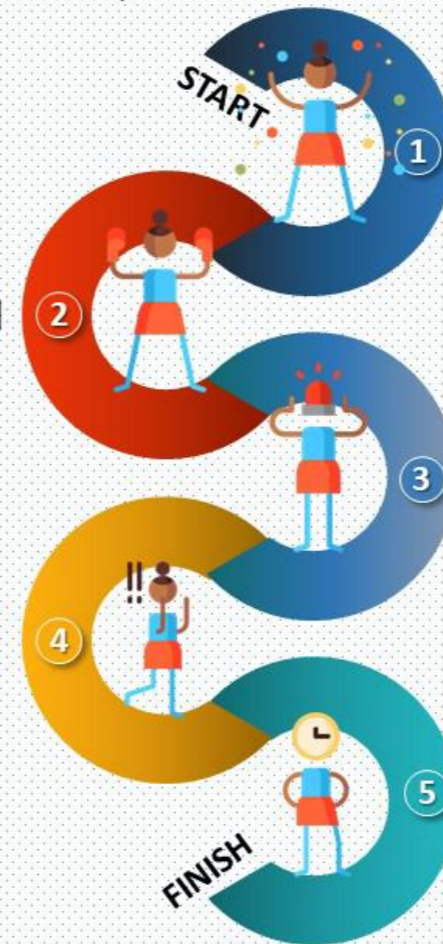


MOTIVACIÓN

APRENDIZAJE

START

FINISH



1 EMOCIÓN

3 ATENCIÓN

5 MEMORIA

# Inteligencias Múltiples



# ¿Qué uso le doy a las Inteligencias Múltiples?

1. Todos mis discentes son inteligentes.
2. Herramienta de comunicación.
3. Mejora de los mapas neuronales de aprendizaje.

# Llamando a la puerta



[www.antoniodomingo.es](http://www.antoniodomingo.es)

...el arte de enseñar con música

# PREMISAS INICIALES

1. Estamos en un proceso de aprendizaje por lo tanto, el error está permitido.
2. Mi intención es llevaros a lugares donde no hay conexiones neuronales suficientes y conectaros a través del esfuerzo, las sonrisas y los errores.
3. No hay ninguna prisa estos procesos son para toda la vida.
4. Disfrutad de la consciencia del NO SABER, tal como deberían hacer vuestros discentes.

¿Sabéis llamar a  
una puerta?

# Inteligencia Musical





# Inteligencia Musical



# Inteligencia Cinético-Corporal



# Inteligencias Múltiples



# Inteligencia Lógico-Matemática



# Inteligencias Múltiples

Contamos número de compases

x8



# Inteligencias Múltiples

Contamos las partes del compás

x8



1

# Inteligencias Múltiples

Contamos las partes del compás

x8



2

# Inteligencias Múltiples

Contamos las partes del compás

x8



3



# Inteligencias Múltiples

Contamos las partes del compás

x8



4

Propuestas para contar  
partes del compás

# Inteligencias Múltiples

Contamos las partes del compás

x8



Reconocimiento  
de la Semifrase

# Inteligencias Múltiples

x8



# Inteligencia Visual-Espacial



Inteligencia  
Visual-Espacial

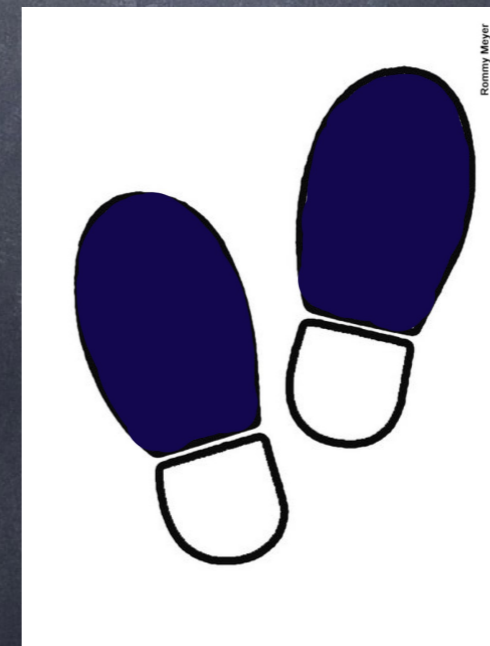
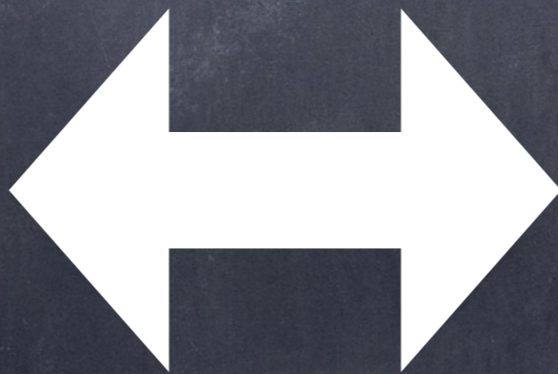
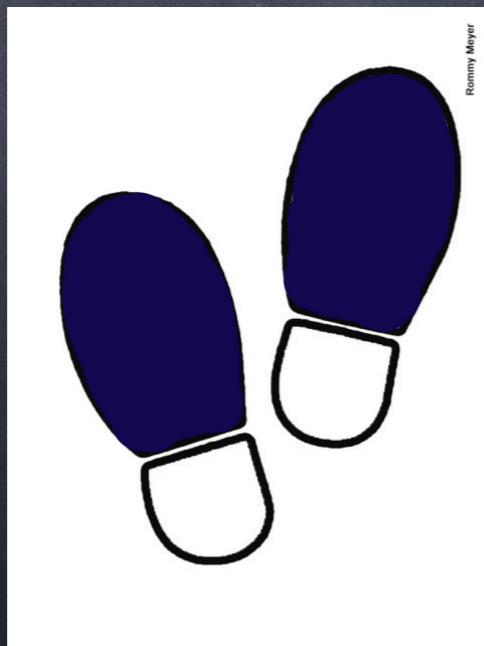
Inteligencia  
Cinético-Corporal



# Inteligencia Cinético-Corporal



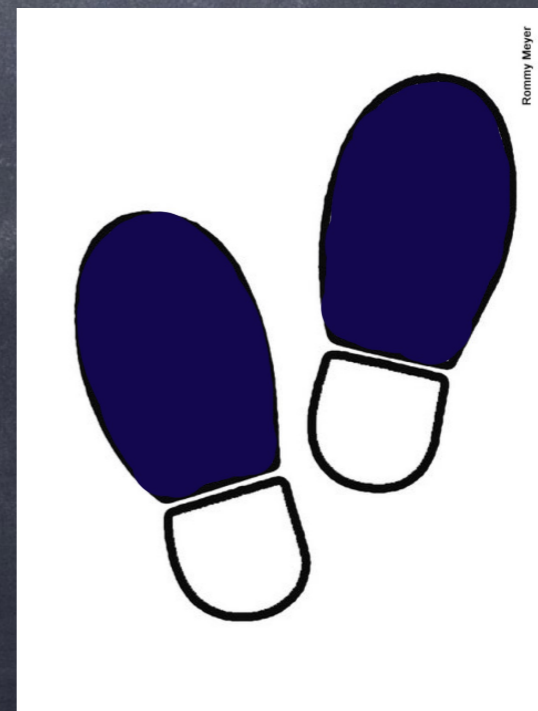
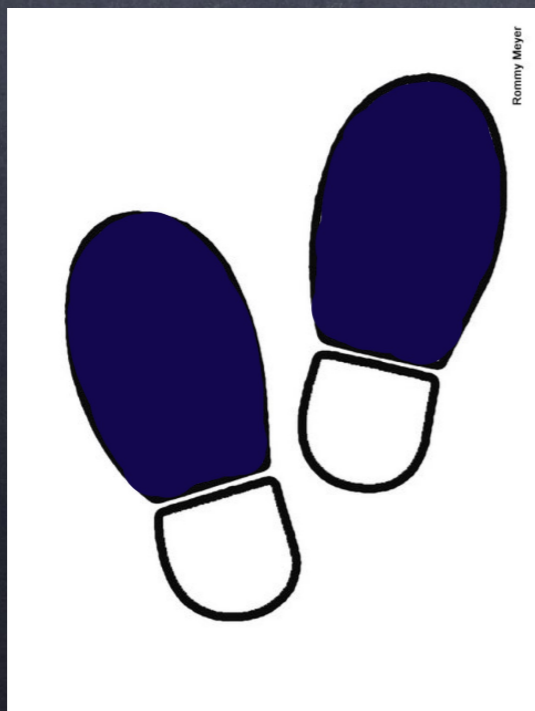
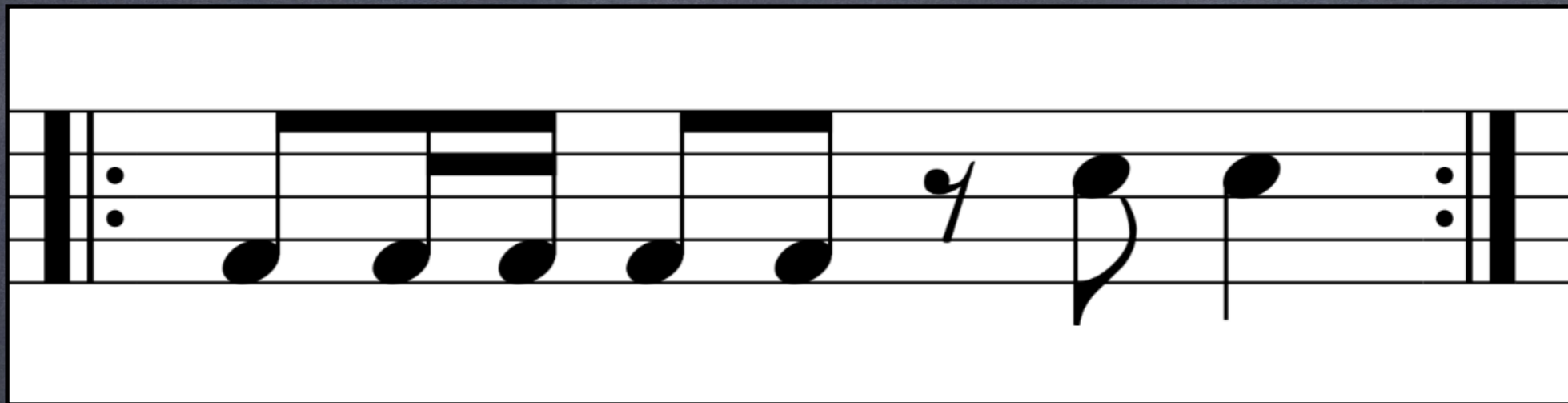
Nº 1





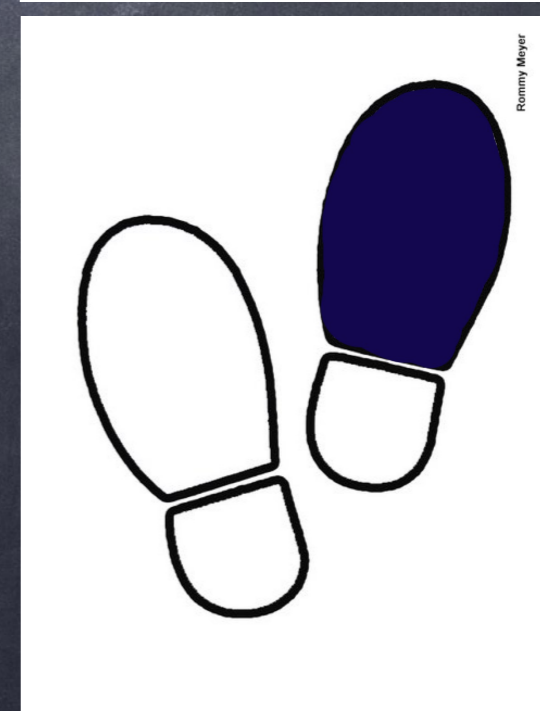
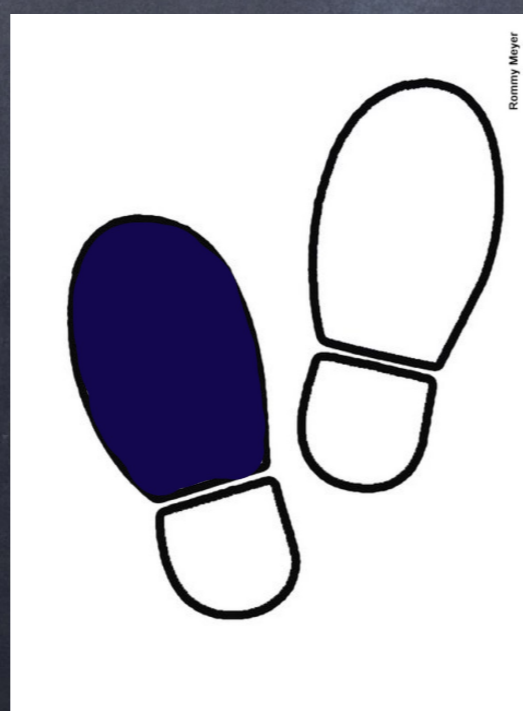
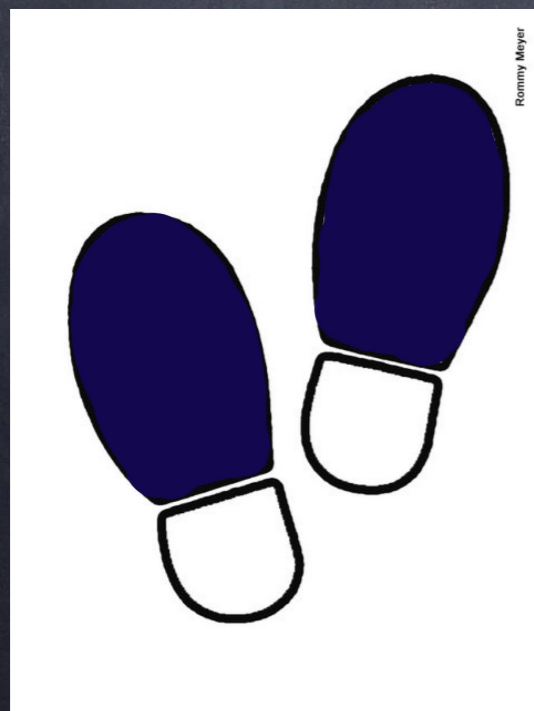
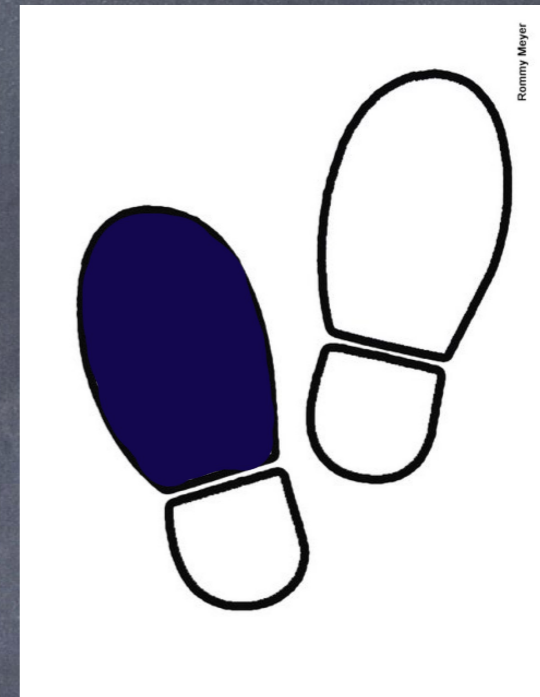
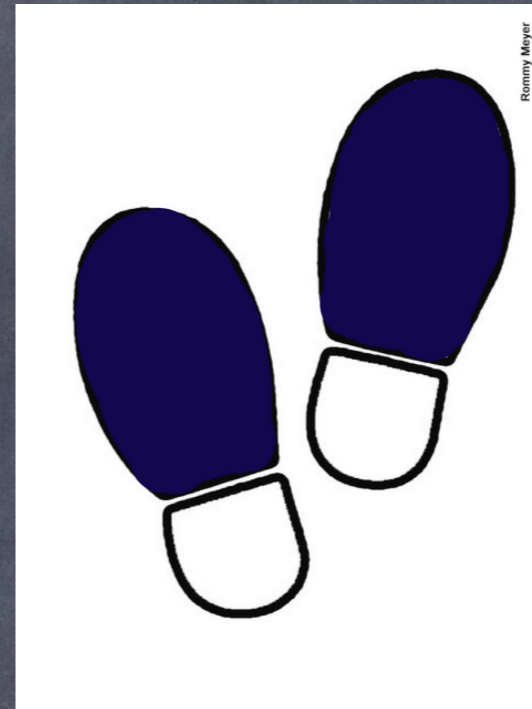
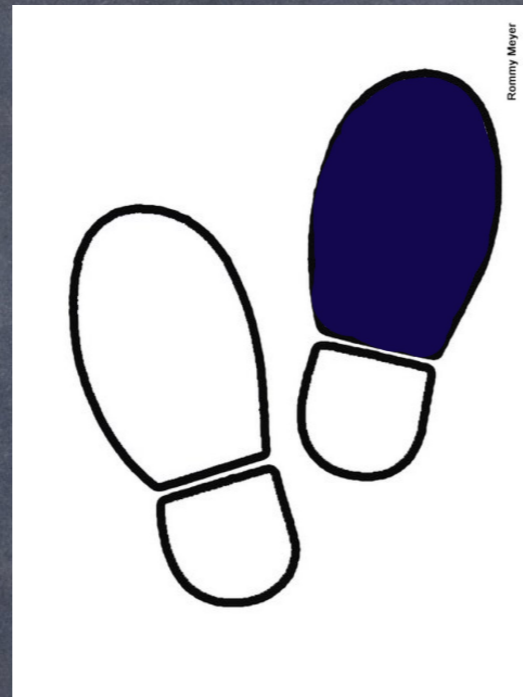
# Inteligencias Múltiples

x8



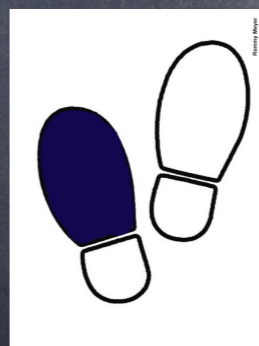
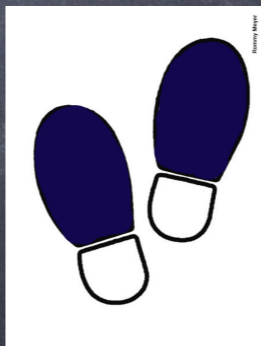
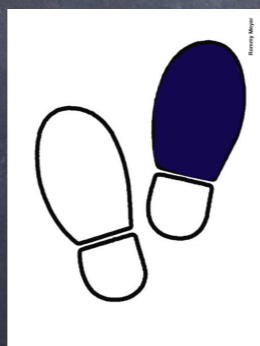
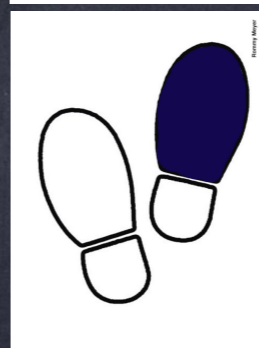
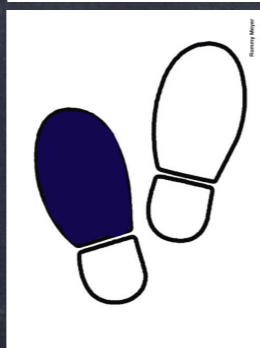
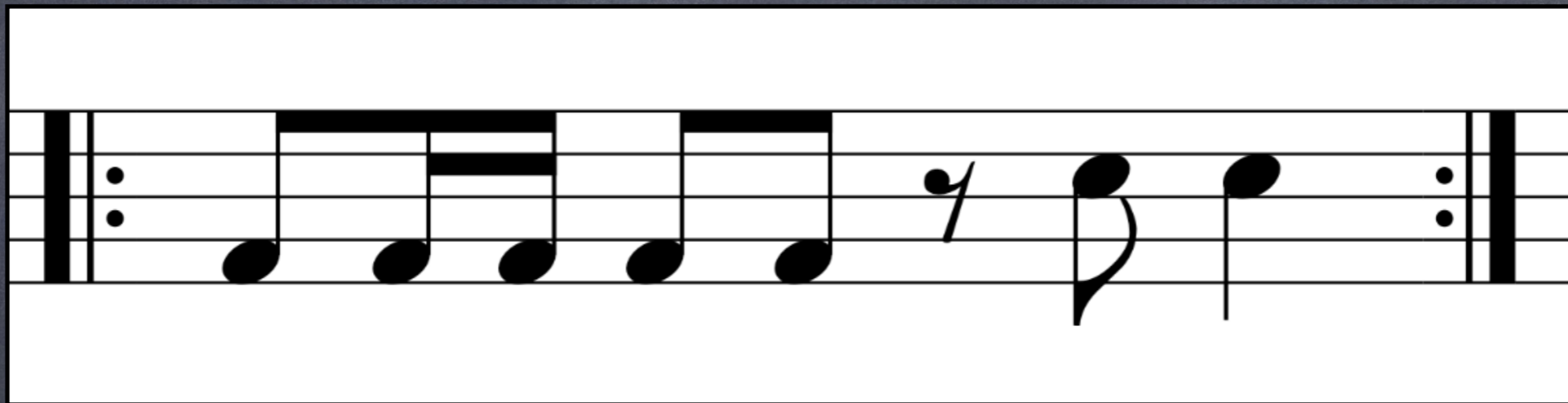
# Inteligencia Visual-Espacial

Nº 2



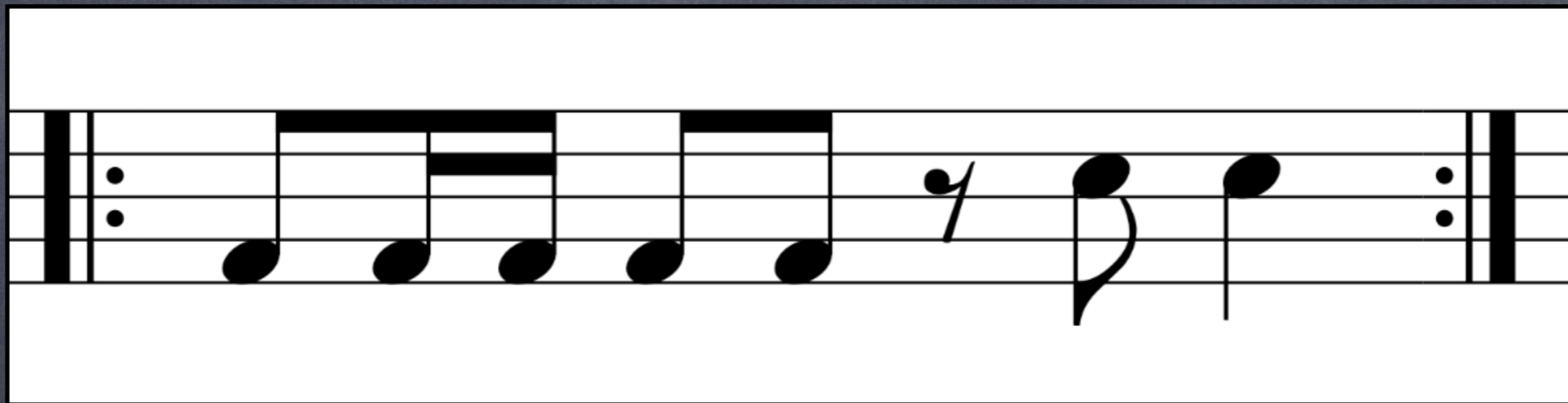
# Inteligencias Múltiples

x8



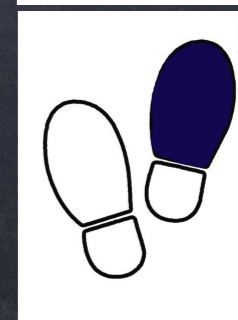
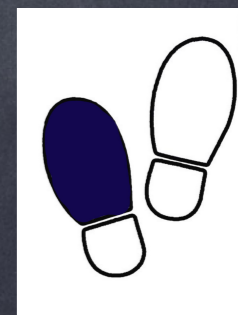
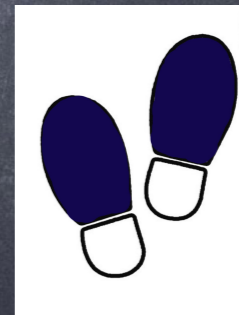
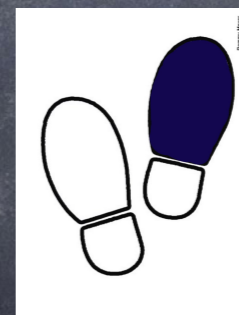
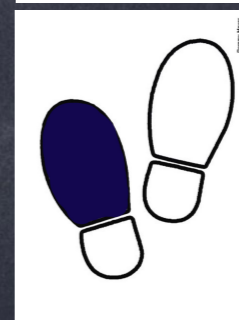
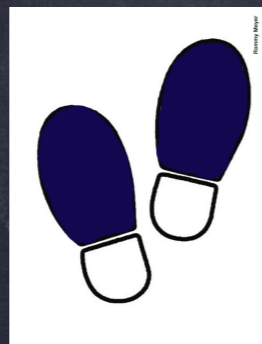
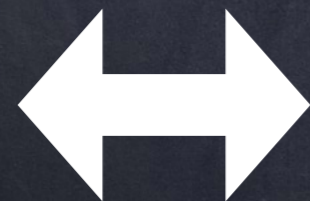
# Inteligencias Múltiples

x8



Nº 1

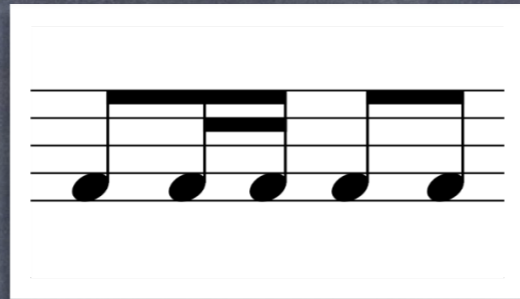
Nº 2



Fragmentamos  
el ritmo y nos dividimos  
en dos grupos

# Inteligencia Musical

Equipo A

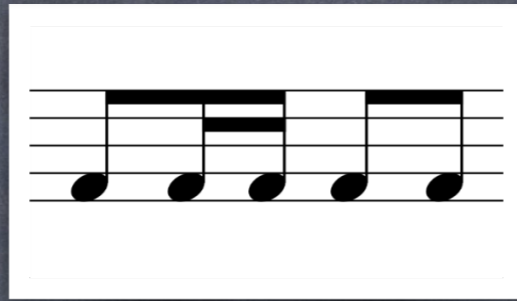


Equipo B

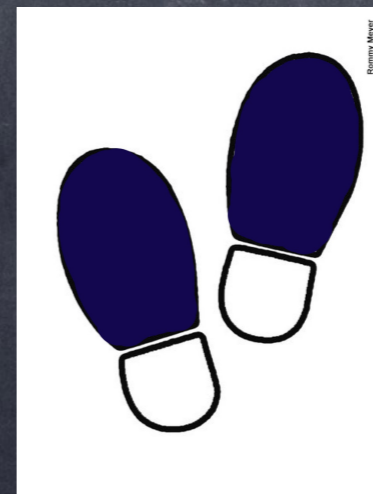
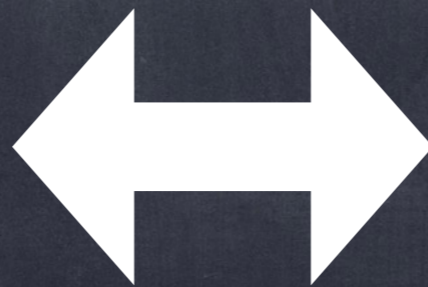
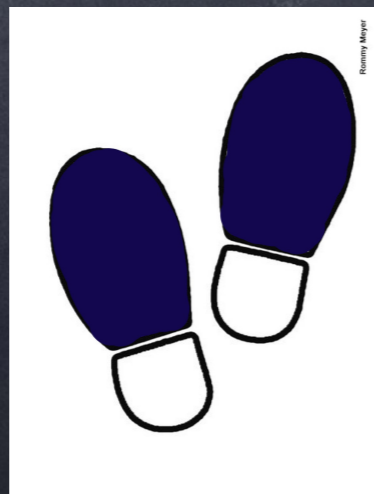


# Inteligencias Múltiples

Equipo A

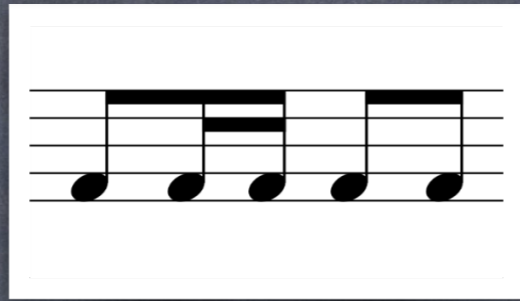


Equipo B

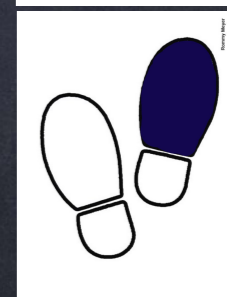
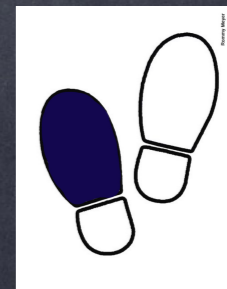
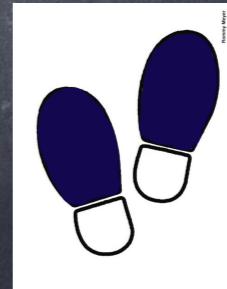
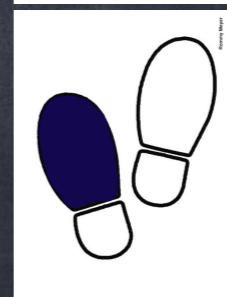
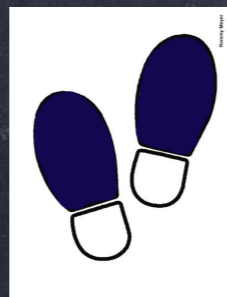


# Inteligencias Múltiples

Equipo A



Equipo B

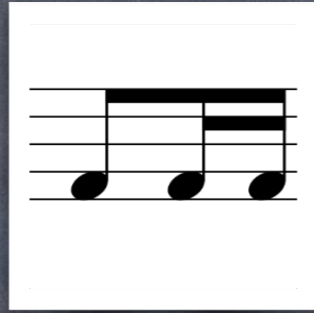




¿Divididos en tres  
grupos?

# Inteligencias Múltiples

Equipo A



Equipo B

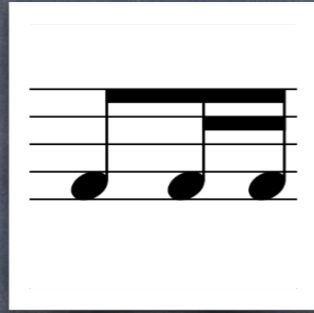


Equipo C



# Inteligencias Múltiples

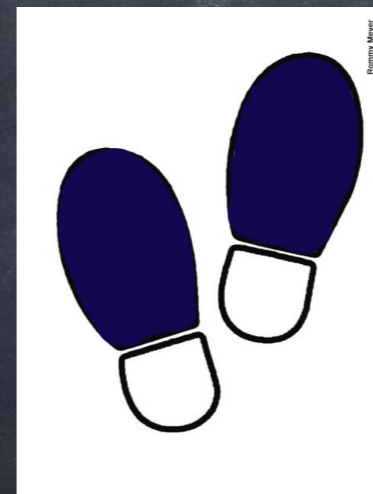
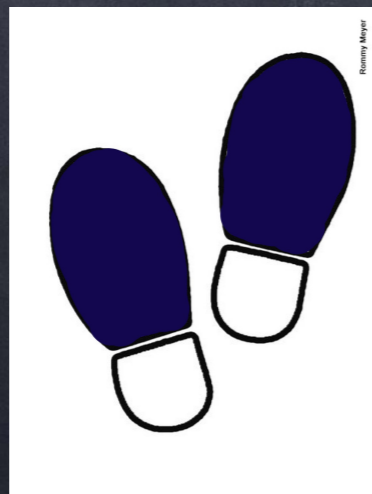
Equipo A



Equipo B



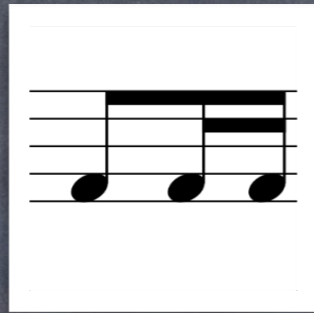
Equipo C



¿Divididos en  
cuatro grupos?

# Inteligencias Múltiples

Equipo A



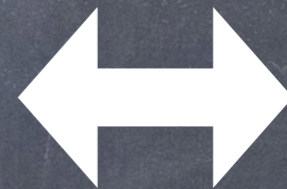
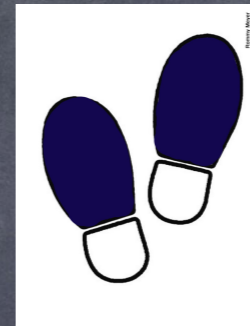
Equipo B



Equipo C



Equipo D



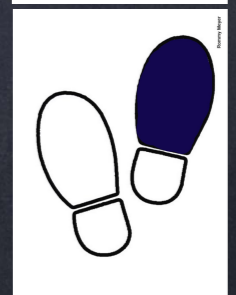
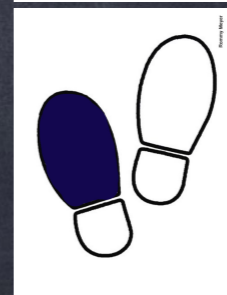
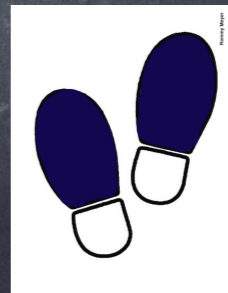
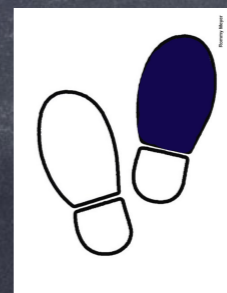
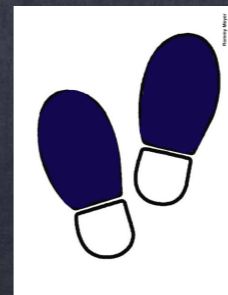
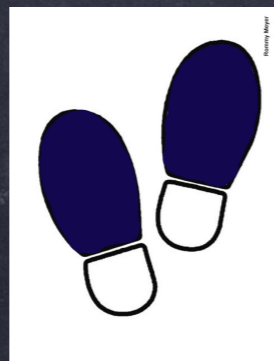
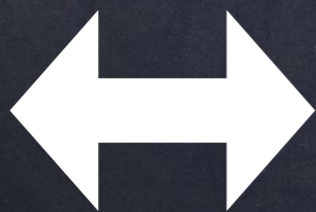
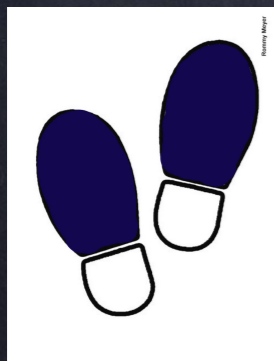
¿Hablamos un poco  
de formas musicales?

¿Canon a dos voces?



# Canon a dos voces

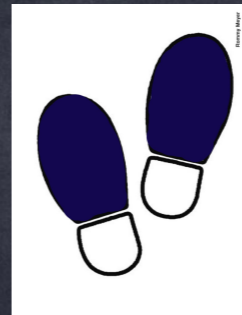
A musical score for two voices. The top staff begins with a treble clef and a key signature of one flat (Bb). The melody consists of a sequence of eighth notes: G4, A4, Bb4, C5, Bb4, A4, G4. This is followed by a quarter rest, a quarter note G4, and a quarter note F4. The bottom staff begins with a bass clef and a key signature of one flat (Bb). It starts with a whole rest, followed by a sequence of eighth notes: G3, A3, Bb3, C4, Bb3, A3, G3. This is followed by a quarter rest, a quarter note G3, and a quarter note F3. Both staves end with repeat signs and double bar lines.





# Canon a cuatro voces

A musical score for a four-voice canon. It consists of four staves. The first staff begins with a treble clef and a key signature of one flat. The music is written in a 4/4 time signature. The first staff starts with a quarter rest, followed by a quarter note, a quarter note, a quarter note, and a quarter note. The second staff starts with a quarter rest, followed by a quarter note, a quarter note, a quarter note, and a quarter note. The third staff starts with a quarter rest, followed by a quarter note, a quarter note, a quarter note, and a quarter note. The fourth staff starts with a quarter rest, followed by a quarter note, a quarter note, a quarter note, and a quarter note. The score is divided into two measures by a double bar line with repeat dots. The first measure contains the first four notes of each staff. The second measure contains the next four notes of each staff. The score ends with a double bar line and repeat dots.



# Inteligencia Lingüística



# Inteligencia Lingüística

- Si si si, si dolada
- Yaku sineladu banaha
- Banaha banaha
- Yaku sineladu banaha
- Ha! Banaha
- Yaku sineladu banaha

# Inteligencias Múltiples

## BANAHA

*Andante*

SI SI SI SI DO LA DA YA KU SI NE LA DU BA NA HA

1.

5 HA BANA HA BANA HA YAKU SI NE LA DU BANA HA BANA

2. 1.

10 HA HA BA NA HA YA KU SI NE LA DU BA NA HA

2. i.

15 HA BA NA HA YA KU SI NE LA DU BA NA HA

D.C.

# Inteligencias Múltiples

## BANAHA

*Andante*

SI SI SI SI DO LA DA YA KU SI NE LA DU BA NA HA

5 HA BANA HA BANA HA YAKU SI NE LADU BANA HA BANA

10 HA HA BA NA HA YA KU SI NE LA DU BA NA HA

15 HA BA NA HA YA KU SI NE LA DU BA NA HA D.C.

A single staff of music showing a musical phrase with a repeat sign at the beginning and end, and a fermata over the final note.

# Inteligencias Múltiples

## BANAHA

*Andante*

SI SI SI SI DO LA DA YA KU SI NE LA DU BA NA HA

HA BANA HA BANA HA YAKU SI NE LA DU BANA HA BANA

HA HA BA NA HA YA KU SI NE LA DU BA NA HA

HA BA NA HA YA KU SI NE LA DU BA NA HA



# Inteligencias Múltiples

## BANAHA

*Andante*

SI SI SI SI DO LA DA YA KU SI NE LA DU BA NA HA

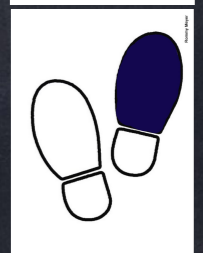
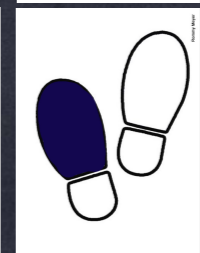
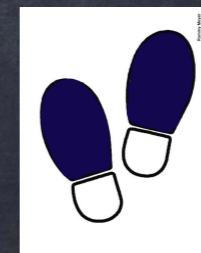
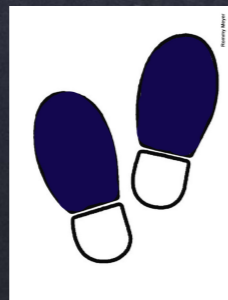
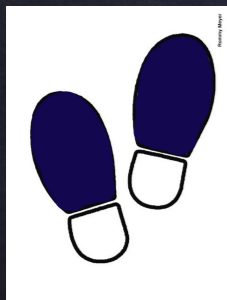
HA BANA HA BANA HA YAKU SI NE LA DU BANA HA BANA

HA HA BA NA HA YA KU SI NE LA DU BA NA HA

HA BA NA HA YA KU SI NE LA DU BA NA HA

D.C.

A musical staff showing a rhythmic exercise with notes and rests.



¿Y si la cambiamos a  
canon?



# Inteligencias Múltiples

## BANAHA

*Andante*

SI SI SI SI DO LA DA YA KU SI NE LA DU BA NA HA

HA BANA HA BANA HA YAKU SI NE LA DU BANA HA BANA

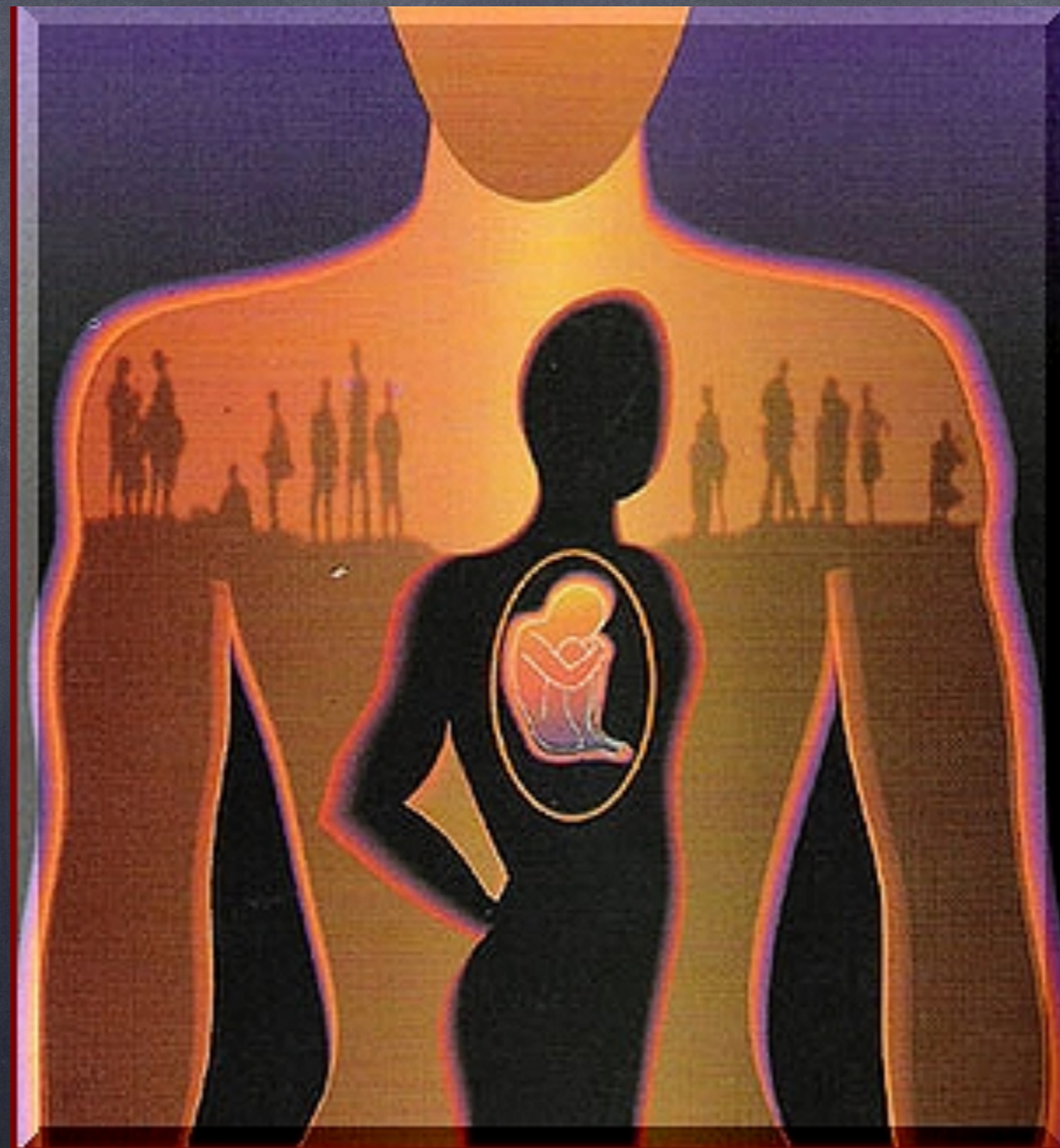
HA HA BA NA HA YA KU SI NE LA DU BA NA HA

HA BA NA HA YA KU SI NE LA DU BA NA HA

D.C.



# Inteligencia Intrapersonal



# Inteligencia Intrapersonal

Cada vez que como  
discente puedes  
tomar decisiones  
en el aula.

# Inteligencia Interpersonal



# Inteligencia Interpersonal

Toda la sesión ha sido en grupo, desarrollando el concepto de tribu y buscando una cohesión plena del aula.

¿Creéis que se os va  
a olvidar cómo  
llamar a una puerta?

Me podéis encontrar en...



@\_antoni Domingo



@antoni Domingo\_ruiz



Antonio Domingo



[www.antoni Domingo.es](http://www.antoni Domingo.es)