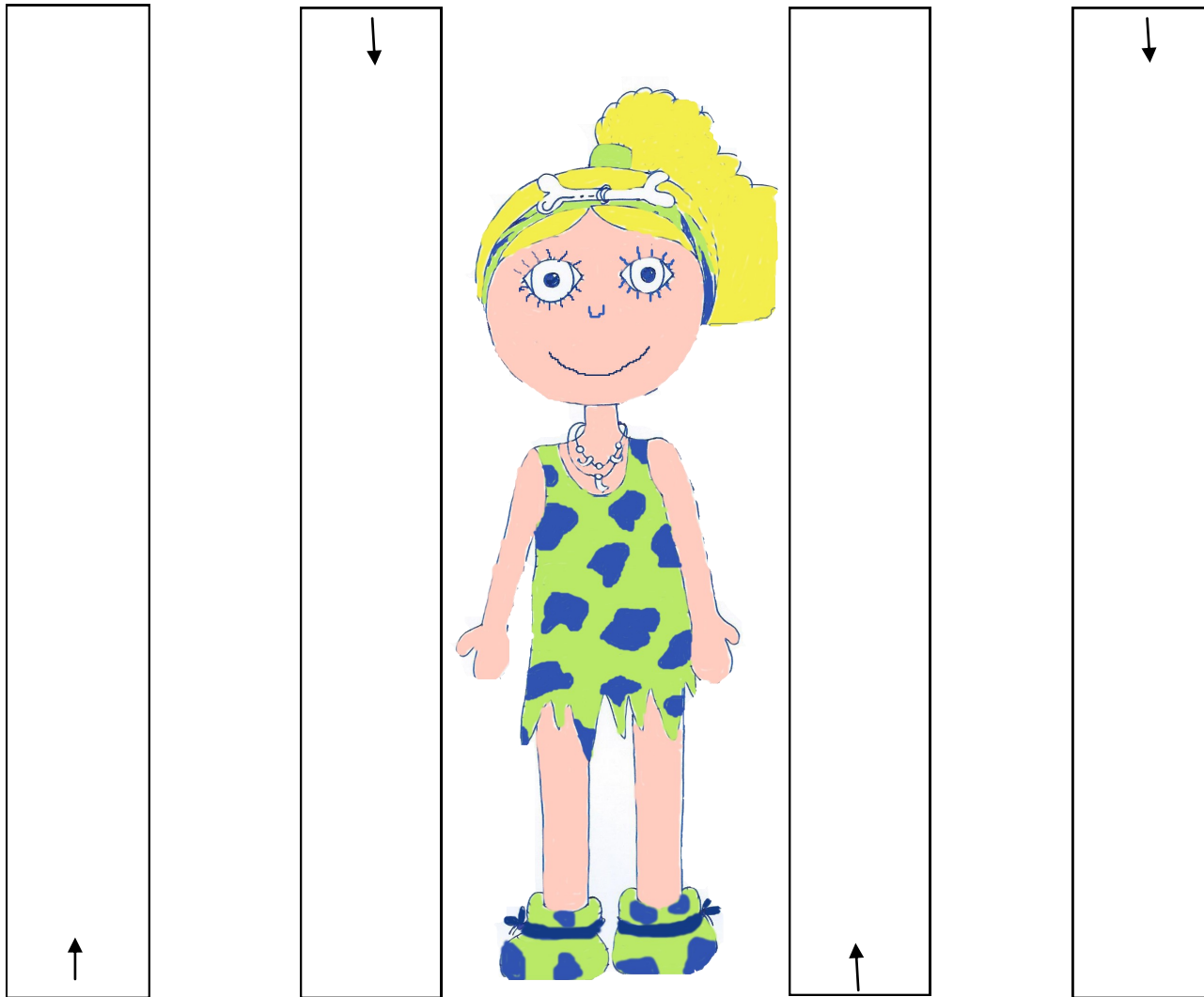


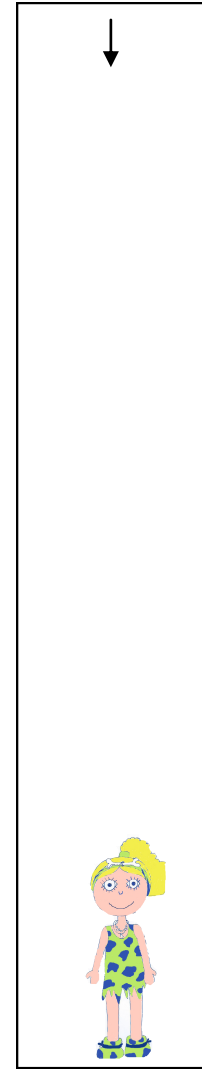
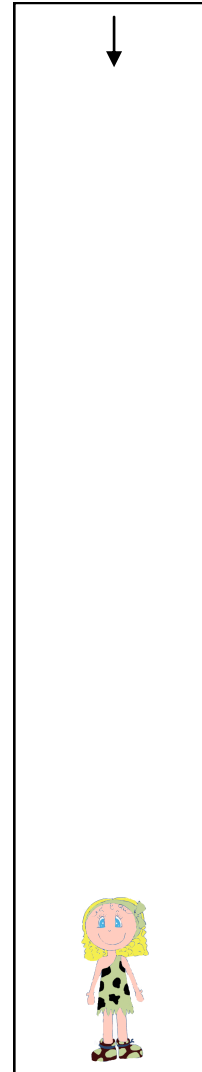


LOS MÁRMOL

Cuaderno de Trazos 1












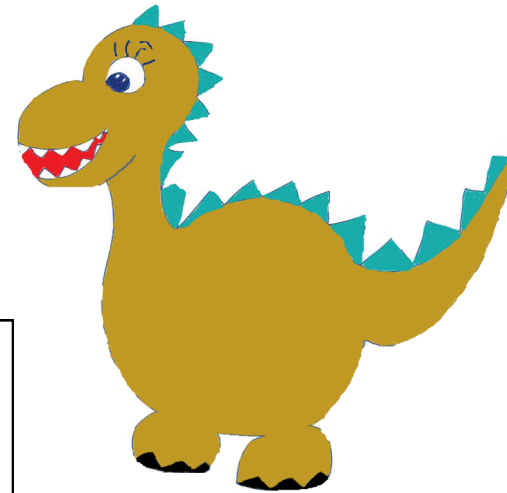
→ 

→ 

 ←

 ←





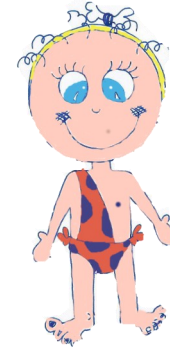
→

→

→

→





Four large, rounded rectangular boxes arranged diagonally from top-left to bottom-right. Each box contains a dashed line for tracing. The top two boxes have a small white arrow pointing to the right at the start of the dashed line. The bottom two boxes have a small white arrow pointing to the right at the start of the dashed line.





Tracing practice area consisting of four large, rounded rectangular boxes arranged in a descending staircase pattern. Each box contains a dashed line with a white arrow pointing to the right, indicating the direction of the stroke. The boxes are intended for practicing the writing of the letter 'a'.

