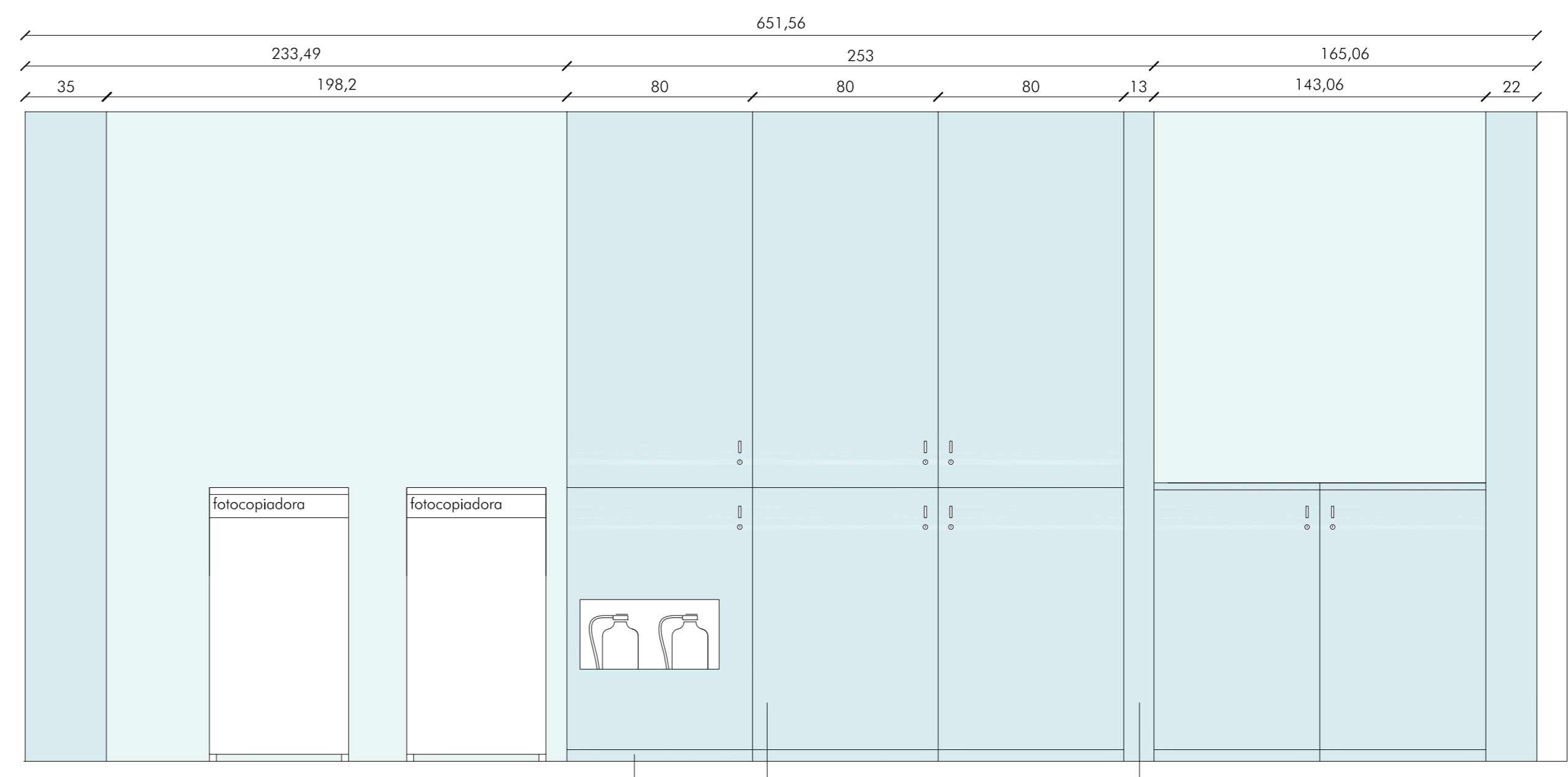
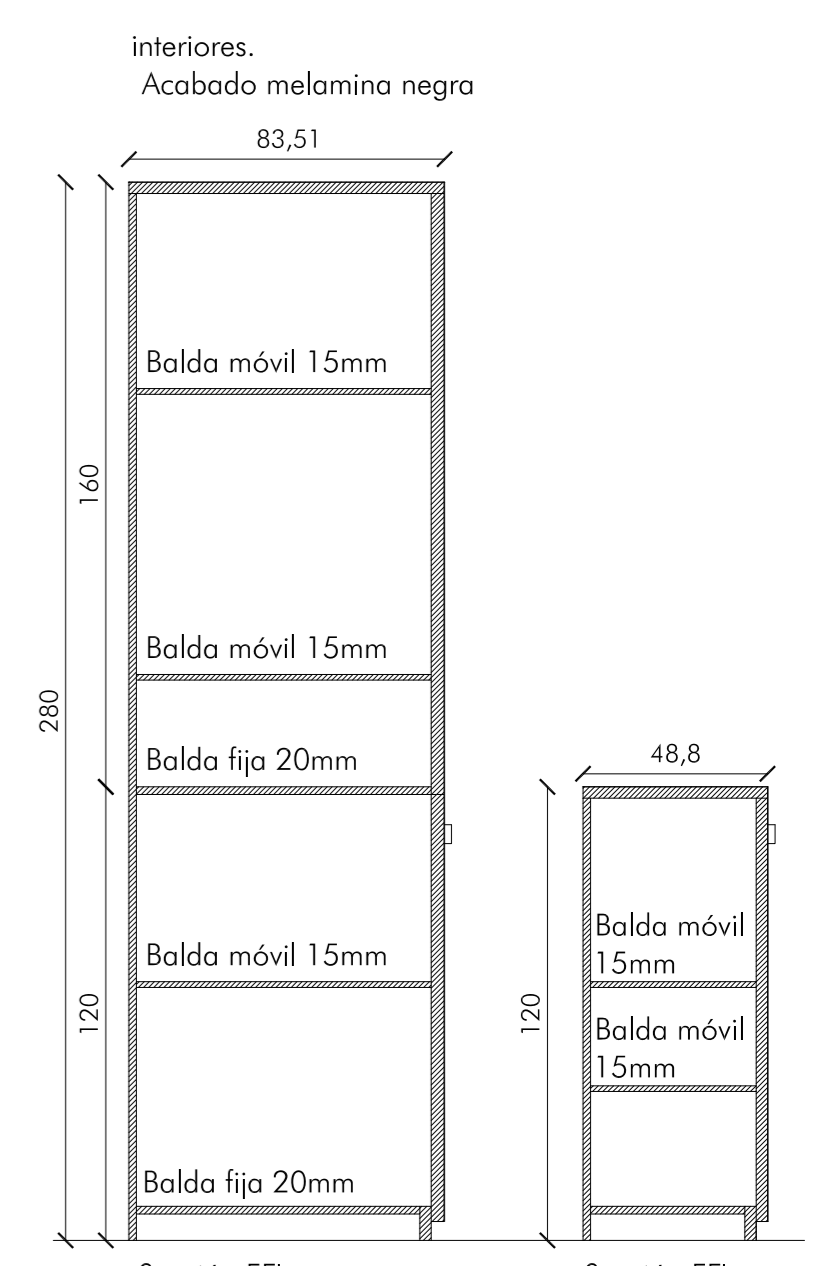


Sección AA'

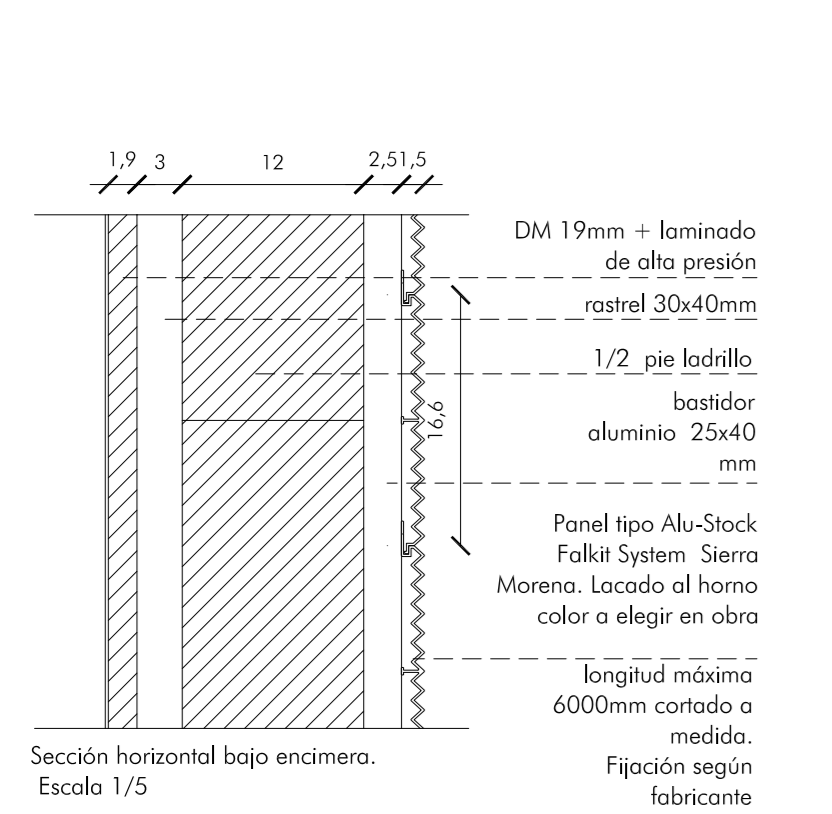


ARMARIO. SECCIÓN CC'

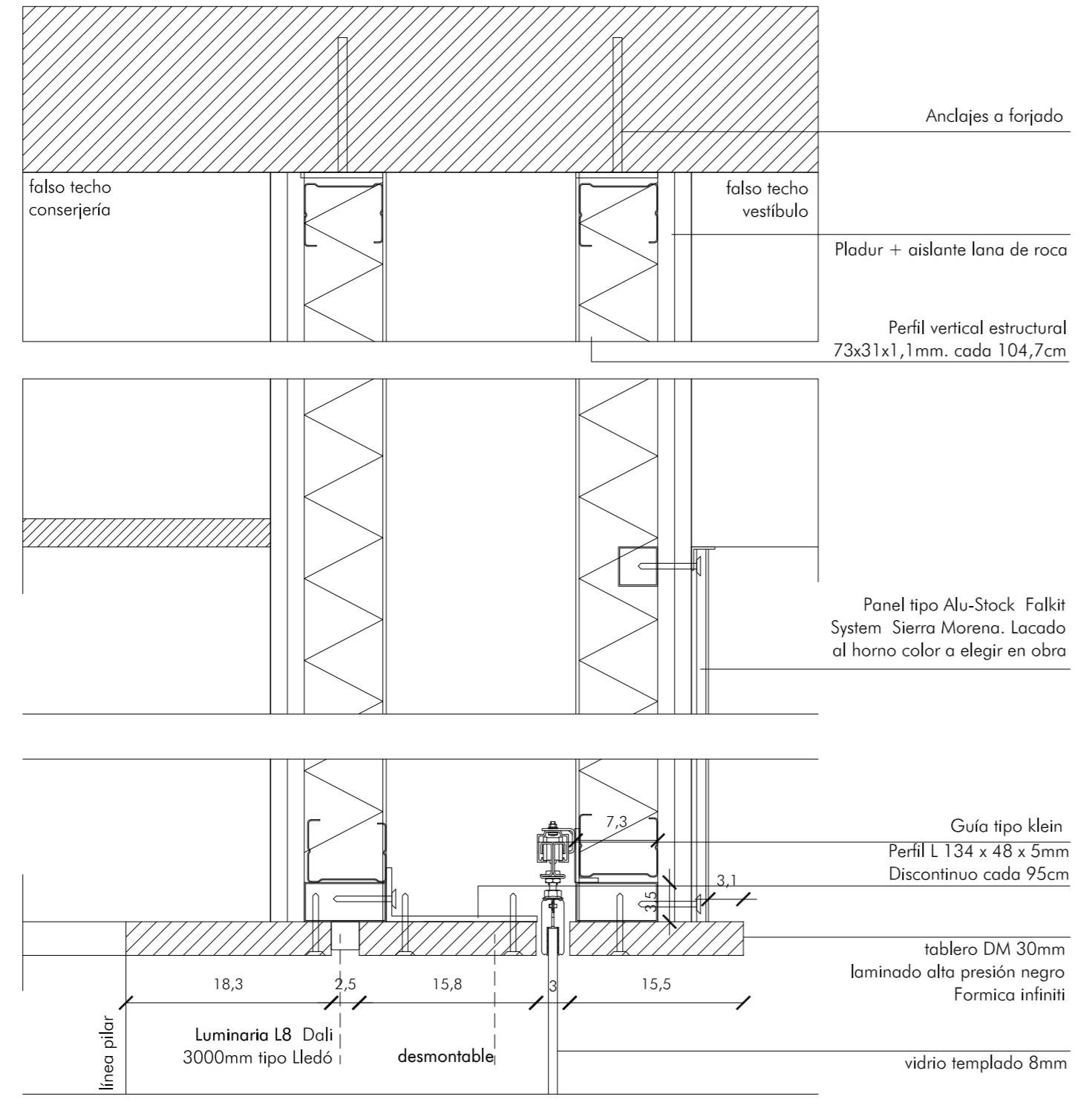


interiores.  
Acabado melamina negra

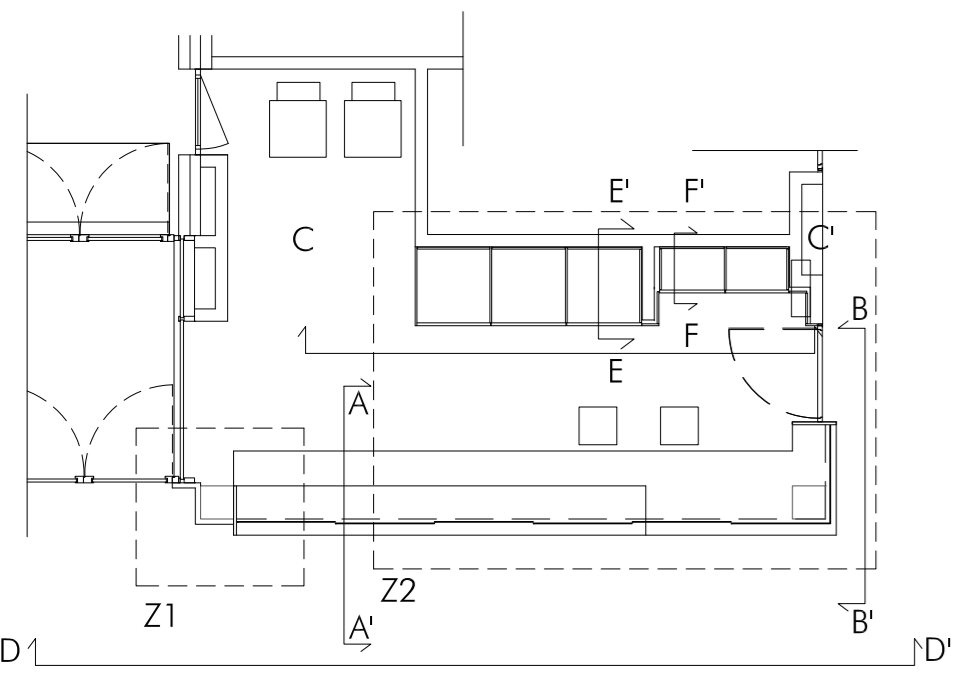
Sección EE'  
Sección FF'



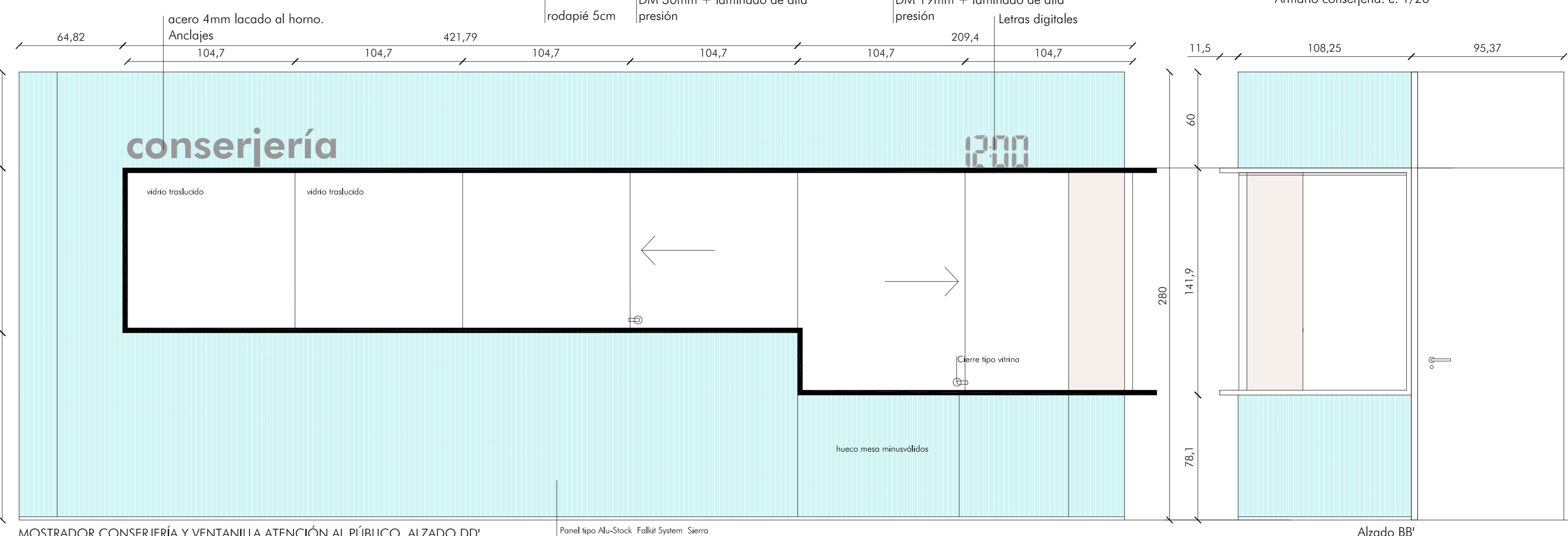
Sección horizontal bajo encimera.  
Escala 1/5



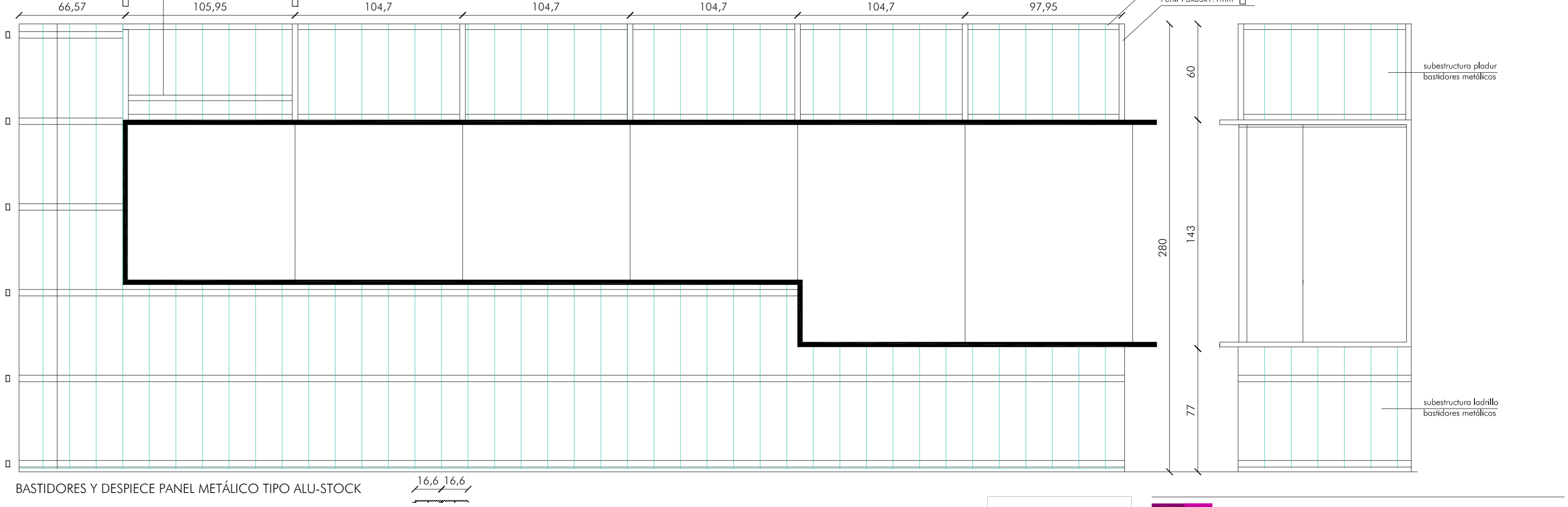
Sección vertical mostrador Escala 1/5



D1



MOSTRADOR CONSERJERÍA Y VENTANILLA ATENCIÓN AL PÚBLICO. ALZADO DD'



BASTIDORES Y DESPIECE PANEL METÁLICO TIPO ALU-STOCK